

MULTI-ZONE SYSTEM FREE MATCH



48°C
SEER / SEER2
21.0 / 21.0
EER / EER2
12.0 / 12.0
-30°C

24°C
HSPF / HSPF2
10.0 / 10.0
COP (at 8°C)
3.91
-30°C



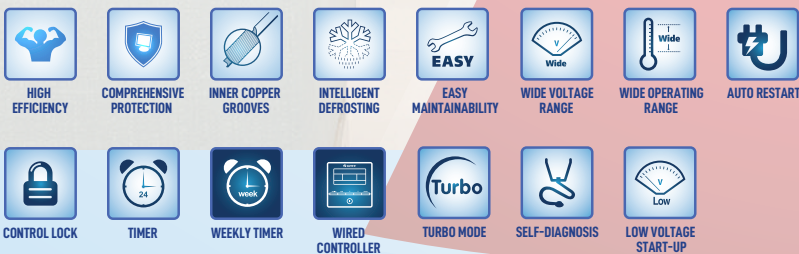
FLEXIBILITY TO MEET YOUR COMFORT NEEDS

Experience comprehensive whole-house comfort with GREE's Free Match series, offering versatile multi-zone systems capable of meeting the unique comfort requirements of every individual and every room in your home. Enjoy both cooling and heating capabilities across up to five separate zones, ensuring tailored comfort throughout your space.

Limited Warranty
10+2*
YEARS
COMPRESSOR
& PARTS

FEATURES AND BENEFITS:

INCLUDED FUNCTION | OPTIONAL FUNCTION



A RELIABLE AND STURDY CONSTRUCTION

- High efficiency, up to 21 SEER2 / 10 HSPF2
- Heat and cool up to 5 zones with one outdoor unit (minimum 2 zones) it all fits together for comfort 21 SEER2 multi-zone system is here.
- 5 unique indoor unit options to select from.
- I deal for residential and commercial spaces.



X61019_B

CONDENSING UNIT			GWHD(18)ND3MO	GWHD(24)ND3MO	GWHD(30)ND3MO	GWHD(36)ND3MO	GWHD(42)ND3MO
AHRI Code (without / with duct) :			208786089 / 208786092	208786090 / 208786093	208786091 / 208786094	208786087 / 208786095	208786088 / 208786096
Connectable Indoor Units	—		2	2 to 3	2 to 4	2 to 4	2 to 5
Power Supply	V/Hz/Ph		208-230 / 60 / 1				
SYSTEM PERFORMANCE							
Capacity	Cooling	BTU/hr	17 000 (7 000 – 19 600)	23 200 (7 500 – 31 400)	28 400 (8 190 - 34 100)	34 000 (8 871 – 35 826)	36 000 (8 871 – 40 944)
	Heating	BTU/hr	18 000 (7 000 – 19 600)	24 000 (7 500 – 31 400)	30 000 (8 190 - 40 900)	36 000 (8 871 – 44 356)	40 000 (8 871 – 46 062)
Power Input	Cooling	W	1 420	1 860	2 270	2 830	3 000
	Heating	W	1 380	1 800	2 250	2 960	3 020
SEER / SEER 2 (without / with duct)	BTU/W*hr		SEER : 21.0 / 16.0	SEER : 21.0 / 16.0	SEER : 21.0 / 16.0	SEER : 21.0 / 16.0	SEER : 21.0 / 16.0
	BTU/W*hr		SEER 2 : 21.0 / 16.0	SEER 2 : 21.0 / 16.0	SEER 2 : 21.0 / 16.0	SEER 2 : 21.0 / 16.0	SEER 2 : 21.0 / 16.0
EER / EER 2 (without / with duct)	BTU/W*hr		EER : 12.0 / 11.0	EER : 12.5 / 11.0	EER : 12.5 / 11.0	EER : 12.0 / 11.0	EER : 12.0 / 11.0
	BTU/W*hr		EER 2 : 12.0 / 11.0	EER 2 : 12.5 / 11.0	EER 2 : 12.5 / 11.0	EER 2 : 12.0 / 11.0	EER 2 : 12.0 / 11.0
HSPF / HSPF 2 (without / with duct)	BTU/W*hr		HSPF : 10.0 / 8.5	HSPF : 10.0 / 8.5	HSPF : 10.0 / 8.5	HSPF : 10.0 / 8.5	HSPF : 10.0 / 8.5
	BTU/W*hr		HSPF 2 : 10.0 / 8.0	HSPF 2 : 10.0 / 8.0	HSPF 2 : 10.0 / 8.0	HSPF 2 : 10.0 / 8.0	HSPF 2 : 10.0 / 8.0
COP (without / with duct)	W/W		3.82 / 3.3	3.91 / 3.4	3.91 / 3.4	3.56 / 3.3	3.88 / 3.5
Energy Star® (without / with duct)	—		YES / NO	YES / NO	YES / NO	YES / NO	NO / NO
OUTDOOR UNIT SPECIFICATIONS							
Ambient Temperature	Cooling	°C (°F)	-30 to 48 (-22 to 118)				
	Heating	°C (°F)	-30 to 24 (-22 to 75)				
Airflow Volume	m3/hr (CFM)		2300 (1354)	3800 (2236)	5800 (3413)	5800 (3413)	5800 (3413)
Sound Pressure Level	dB(A)		54	58	63	63	63
Minimum Circuit Ampacity (MCA)	A		15	19	23	29	29
Maximum Overcurrent Protection (MOP)	A		20	25	35	45	45
Dimensions	Width	mm (in)	822 (32-3/8)	964 (37-31/32)	1020 (40-5/32)	1020 (40-5/32)	1020 (40-5/32)
	Height	mm (in)	550 (21-21/32)	660 (26)	826 (32-1/2)	826 (32-1/2)	826 (32-1/2)
	Depth	mm (in)	352 (13-27/32)	402 (15-13/16)	427 (16-13/16)	427 (16-13/16)	427 (16-13/16)
Weight	Net	kg (lb)	35.0 (77.2)	52.0 (114.7)	69.0 (152.1)	78.0 (172.0)	79.0 (174.2)
	Gross	kg (lb)	37.5 (82.7)	56.5 (124.6)	76.0 (167.6)	85.0 (187.4)	86.0 (189.6)
REFRIGERATION SYSTEM							
Suction Line Size	mm (in)		ø 9.52 (3/8)	ø 9.52 (3/8)	ø 9.52 (3/8)	ø 9.52 (3/8)	ø 9.52 (3/8)
Liquid Line Size	mm (in)		ø 6.35 (1/4)	ø 6.35 (1/4)	ø 6.35 (1/4)	ø 6.35 (1/4)	ø 6.35 (1/4)
Pre-load length	m (ft)		10 (33)	30 (98)	40 (131)	40 (131)	40 (131)
Maximum pipe length	m (ft)		20 (65.6)	20 (65.6)	25 (82.0)	25 (82.0)	25 (82.0)
Maximum total pipe length	m (ft)		40 (131.2)	60 (196.8)	80 (262.5)	80 (262.5)	100 (328.1)
Maximum elevation between IDUs	m (ft)		15 (49.2)	15 (49.2)	25 (82.0)	25 (82.0)	25 (82.0)
Maximum elevation between ODU and IDU	m (ft)		15 (49.2)	15 (49.2)	25 (82.0)	25 (82.0)	25 (82.0)
Refrigerant Type / Charge	kg (oz)		R410A / 1.3 (45.9)	R410A / 2.4 (84.7)	R410A / 3.0 (105.8)	R410A / 3.7 (130.5)	R410A / 3.8 (134.0)

- G10 Inverter technology
- Can power up to 5 indoor units
- Low voltage start-up
- Fins with anti-corrosion coating

- Self-diagnosis function
- Automatic defrost function
- Heavy gauge steel cabinet
- Eco-friendly R410A refrigerant



18K, 24K & 30K BTU/hr condensing units

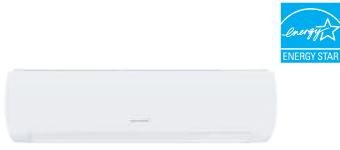


36K & 42K BTU/hr condensing units

GREE HVAC technology delivers superior comfort for all

INDOOR UNITS

GREE revolutionizes layout flexibility by enabling the simultaneous operation of up to five indoor units using a single outdoor unit. For unparalleled adaptability, customize your Free Match heating and cooling system by selecting from our range of indoor units, including wall-mounted units, mini floor consoles, slim ducts, and ceiling cassettes.



WALL-MOUNTED UNIT

Slim compact design hangs inconspicuously on the wall and mixes with most interior designs.



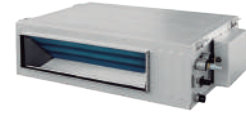
MINI FLOOR CONSOLE

Installed low on a wall, it is perfect for knee-walls and radiator-style installations.



CEILING CASSETTE

360° air supply design for a wide air supply range and balanced temperature distribution, more comfortable.



SLIM DUCT

Compact and powerful, the high static or low static slim duct offers the ultimate in flexibility and discretion

WALL-MOUNTED UNIT		GWH09AFCXD-D3DNA1A/I	GWH12AFCXD-D3DNA1A/I	GWH18AFDXF-D3DNA1A/I	GWH24AFEXH-D3DNA1A/I	
Power Supply	V/Hz/Ph					
Capacity	Cooling	9 100	12 000	18 000	22 000	
	Heating	10 500	12 000	18 000	24 000	
Energy Star ®	—	YES	YES	YES	YES	
Moisture Removal Capacity	L/hr (pt/hr)	1.69 (0.80)	2.96 (1.4)	3.80 (1.8)	5 (2.40)	
Airflow Volume	CFM	353 / 323 / 294 / 264 / 235 / 176 / 158	400 / 364 / 329 / 288 / 264 / 247 / 229	589 / 500 / 441 / 412 / 383 / 353 / 324	736 / 588 / 530 / 471 / 441 / 412 / 383	
Sound Pressure Level	dB(A)	50 / 47 / 45 / 42 / 39 / 36 / 35	53 / 48 / 46 / 44 / 42 / 40 / 37	59 / 53 / 51 / 50 / 47 / 43 / 39	62 / 54 / 52 / 49 / 48 / 46 / 44	
Dimensions	Width	mm (in)	894 (35-13/64)	894 (35-13/64)	1017 (40-3/64)	1135 (44-4/64)
	Height	mm (in)	291 (11-29/64)	291 (11-29/64)	304 (11-62/64)	328 (12-58/64)
	Depth	mm (in)	211 (8-20/64)	211 (8-20/64)	221 (8-45/64)	247 (9-46/64)
Weight	Net	kg (lb)	9.5 (21)	9.5 (21)	13.5 (29)	16 (35)
	Gross	kg (lb)	12 (25.4)	12.5 (27.56)	16 (35.3)	19 (41.9)

MINI FLOOR CONSOLE		GEH(09)AA-D3DNA1C/I	GEH(12)AA-D3DNA1C/I	GEH(18)AA-D3DNA1C/I
Power Supply	V/Hz/Ph	208-230 / 60 / 1 (powered by the outdoor unit)		
Capacity	Cooling	8 873	11 946	18 089
	Heating	9 556	12 969	19 795
Moisture Removal Capacity	L/hr (pt/hr)	0.80 (1.69)	1.40 (2.96)	1.80 (3.80)
Airflow Volume	m3/hr (CFM)	500 / 430 / 410 / 330 / 280 / 230 (294 / 253 / 241 / 194 / 165 / 147)	600 / 520 / 481 / 400 / 360 / 280 (353 / 306 / 283 / 235 / 212 / 165)	650 / 620 / 550 / 410 / 320 (383 / 365 / 324 / 265 / 241 / 188)
Sound Pressure Level	dB(A)	40 / 38 / 36 / 33 / 30 / 27 / 25	42 / 40 / 38 / 37 / 35 / 32 / 27	48 / 46 / 44 / 41 / 37 / 35 / 32
Dimensions	Width	mm (in)	700 (27-9/16)	700 (27-9/16)
	Height	mm (in)	600 (23-5/8)	600 (23-5/8)
	Depth	mm (in)	215 (8-1/2)	215 (8-1/2)
Weight	Net	kg (lb)	15 (33)	15 (33)
	Gross	kg (lb)	18 (40)	18 (40)

CEILING CASSETTE			GKH(12)EB-D3DNA5A/I	GKH(18)EB-D3DNA5A/I	GKH(24)EC-D3DNA6A/I
Power Supply		V/Hz/Ph	208-230 / 60 / 1 (powered by the outdoor unit)		
Capacity	Cooling	BTU/hr	12 000	14 400	22 800
	Heating	BTU/hr	13 000	16 000	27 400
Moisture Removal Capacity		L/hr (pt/hr)	1.40 (2.96)	1.80 (3.80)	2.50 (5.28)
Airflow Volume		m ³ /hr (CFM)	560 / 520 / 450 (330 / 306 / 265)	670 / 590 / 450 (394 / 347 / 265)	1220 / 1100 / 880 (718 / 647 / 518)
Sound Pressure Level		dB(A)	44 / 41 / 38 / 34	47 / 45 / 41 / 35	47 / 45 / 41 / 36
Dimensions	Width	mm (in)	570 (22-1/2)	570 (22-1/2)	840 (33-1/16)
	Height	mm (in)	265 (10-1/2)	265 (10-1/2)	240 (9-1/2)
	Depth	mm (in)	570(22-1/2)	570(22-1/2)	840 (33-1/16)
Weight	Net	kg (lb)	17.0 (37.5)	17.0 (37.5)	29.0 (63.9)
	Gross	kg (lb)	22.0 (48.5)	22.0 (48.5)	37.0 (81.5)
DECORATIVE GRILLE SPECIFICATIONS			TF05	TF05	TF06
Dimensions	Width	mm (in)	670 (26-3/8)	670 (26-3/8)	950 (37-9/16)
	Height	mm (in)	47.5 (1-7/8)	47.5 (1-7/8)	52 (2)
	Depth	mm (in)	620 (24-1/2)	620 (24-1/2)	950 (37-9/16)
Weight	Net	kg (lb)	3 (6.6)	3 (6.6)	6 (13.2)
	Gross	kg (lb)	4 (8.8)	4 (8.8)	9.5 (21)

Every Ceiling Cassette is Energy Star rated.

LOW STATIC SLIM DUCT			GFH(09)EA-D3DNA1A/I	GFH(12)EA-D3DNA1A/I	GFH(18)EA-D3DNA1A/I	GFH(21)EA-D3DNA1A/I	GFH(24)EA-D3DNA1A/I
Power Supply		V/Hz/Ph	208-230 / 60 / 1 (powered by the outdoor unit)				
Capacity	Cooling	BTU/hr	8 533	11 946	15 359	20 478	24 232
	Heating	BTU/hr	9 556	13 140	18 772	22 526	27 304
Moisture Removal Capacity		L/hr (pt/hr)	0.80 (1.69)	1.40 (2.96)	1.80 (3.80)	2.50 (5.28)	2.50 (5.28)
Airflow Volume		m ³ /hr (CFM)	450 / 300 / 250 (265 / 177 / 147)	500 / 400 / 300 (294 / 235 / 177)	700 / 600 / 500 (412 / 353 / 294)	1000 / 750 / 550 (589 / 441 / 324)	1000 / 750 / 550 (589 / 441 / 324)
Sound Pressure Level		dB(A)	37 / 34 / 31	39 / 35 / 32	41 / 37 / 33	42 / 38 / 34	42 / 38 / 34
Rated External Static Pressure		Pa (in.w.g)	10 (0.04)	10 (0.04)	10 (0.04)	15 (0.06)	15 (0.06)
Dimensions	Width	mm (in)	700 (27-3/4)	700 (27-3/4)	900 (35-3/8)	1100 (43-3/8)	1100 (43-3/8)
	Height	mm (in)	615 (24-1/4)	615 (24-1/4)	615 (24-1/4)	615 (24-1/4)	615 (24-1/4)
	Depth	mm (in)	200 (7-7/8)	200 (7-7/8)	200 (7-7/8)	200 (7-7/8)	200 (7-7/8)
Weight	Net	kg (lb)	22 (48.5)	23 (50.7)	27 (59.5)	31 (68.3)	31 (68.3)
	Gross	kg (lb)	27 (59.5)	29 (63.9)	36 (79.4)	41 (90.4)	41 (90.4)

HIGH STATIC SLIM DUCT			GFH(09)DA-D3DNA1A/I	GFH(12)DA-D3DNA1A/I	GFH(18)DB-D3DNA1A/I	GFH(24)DB-D3DNA1A/I
Power Supply		V/Hz/Ph	208-230 / 60 / 1 (powered by the outdoor unit)			
Capacity	Cooling	BTU/hr	9 000	12 000	18 000	24 000
	Heating	BTU/hr	9 500	13 000	19 000	27 000
Moisture Removal Capacity		L/hr (pt/hr)	0.80 (1.69)	1.40 (2.96)	1.80 (3.80)	2.50 (5.28)
Airflow Volume		m ³ /hr (CFM)	550 / 430 / 360 / 320 (324 / 253 / 212 / 188)	600 / 490 / 420 / 360 (353 / 288 / 247 / 211)	1000 / 700 / 530 / 490 (588 / 412 / 312 / 288)	1250 / 950 / 770 / 690 (735 / 559 / 453 / 406)
Sound Pressure Level		dB(A)	36 / 30 / 27 / 25	38 / 35 / 30 / 26	39 / 33 / 29 / 26	42 / 36 / 32 / 28
Rated External Static Pressure		Pa (in.w.g)	60 (0.24)	60 (0.24)	90 (0.36)	90 (0.36)
Dimensions	Width	mm (in)	830 (32-43/64)	830 (32-43/64)	1130 (44-31/64)	1130 (44-31/64)
	Height	mm (in)	754 (29-11/16)	754 (29-11/16)	754 (29-11/16)	754 (29-11/16)
	Depth	mm (in)	300 (11-13/16)	300 (11-13/16)	300 (11-13/16)	300 (11-13/16)
Weight	Net	kg (lb)	32 (70.6)	32 (70.6)	42 (92.6)	42 (92.6)
	Gross	kg (lb)	38 (83.8)	38 (83.8)	48.5 (106.9)	48.5 (106.9)

* Gree products are subject to continuous improvements. Dettson reserves the right to modify product design, specifications and information without notice and without incurring obligations.

