



*Eligible for local rebates



Performance in cooling down to

-18 C°



CHARMO 19

Ductless Single Zone Air-conditioner

F E A T U R E S

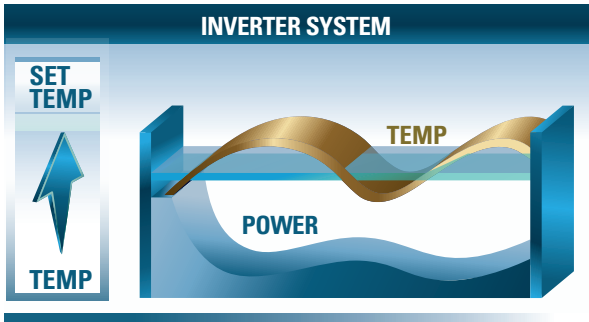
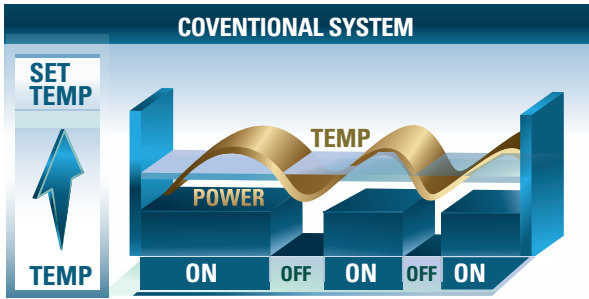


- Cooling, dehumidifying, fan and auto. 9000, 12000, 18000, 24000 BTU/hr.
- 230/208V, 60 Hz, 1-phase.
- High wall installation, dual side connection.
- Plastic housing, standard white.
- 7-speed cross-flow fan (auto, turbo, high, medium-high, medium, low and very low).
- Washable filters.
- Variable speed rotary compressor (INVERTER), with overload protection.
- Electronic expansion valve for precise control of refrigerant flow.
- Condenser fins covered with a hydrophilic coating for improved corrosion resistance.
- Large diameter quiet axial-flow fan for more efficient heat exchange.
- Minimum piping length of 10 ft. (3 m).
- Flared connections.
- Wireless remote included.
- Wired wall controller available.
- Wi-Fi.
- Set temperature: 16 to 30 °C (61 to 86 °F).
- Temperature display format: °C or °F.

*Please check with your local and federal rebate programs

**10 year standard warranty. Additional 2 year extended warranty when product is registered and/or proof of installation

X61016_B



Why go Inverter?

The key difference between an inverter and non-inverter air conditioner is that an inverter system can regulate the speed of its compressor and motor. Once the room is cool, inverter technology reduces the speed of the motor and refrigerant used to cool the area, thus saving on energy.

In comparison, non-inverter motors only runs at full speed. The motor runs at full speed and turns off once room temperature drops to the desired level. This repeated on-off process can produce unnecessary noise and consume more energy.



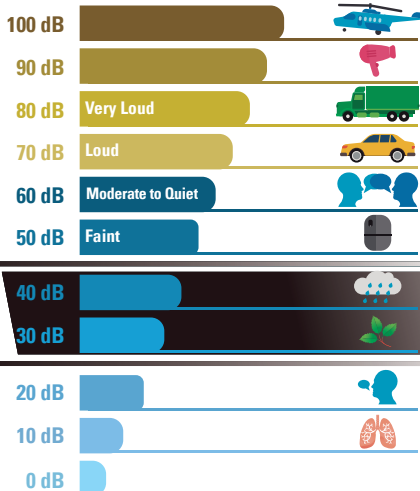
Saves up to 30% on your utility bill

Since mini-splits require no ducting, they forego those energy losses typically associated with conventional central systems. Ducts not properly sealed or unconditioned spaces such as attics, crawlspaces, or poorly insulated rooms can account for more than 30% of loss energy consumption, leading to a more expensive utility bill.

A Quiet Option

With inverter technology, the indoor unit will continuously run at adjusted speeds, eliminating the loud start-up conventional air conditioning system require.

This comfort will allow a flexible installation in areas that will not interrupt day-to-day activities with unnecessary noise pollution.



Condenser Features

- Ultra high efficiency up to 19 SEER2 cooling.
- Advanced inverter compressor provides faster response to reaching comfort temperatures
- Low voltage startup helps operate system from 187V to 253, adapting to unstable power suppliers
- Self-Diagnostic built-in computer which uses real-time diagnostics which helps prolong the unit's life and alerts users with simple error codes the system may be having.



Wall Mount Features

- Multiple fan speed options for better control of your comfort
- **Ultra-Quiet indoor operations with inverter technology**
- Wide angle air guides enable a full 180° swing up and down for superior air distribution
- Multiple modes such as Sleep, I-feel, Turbo and Dehumidification



Control Features

- Multi-functional wireless remote control with large LCD display
- "I FEEL" mode can sense the room temperature from the remote control, adjusting to your locations comfort
- **Wifi Access to control your system away from your system's location. Compatible with Amazon Alexa and Google Home.**
- Sleep Mode allows the unit to automatically adjust room's temperature at low sound levels
- Available displays in °F or °C



- Two-Stage Variable Speed
- Compressor Quiet Operation
- Low Voltage Startup
- Multiple fan speed
- Adjustable LED display
- Precise Airflow Control
- Eco-Friendly R410a Refrigerant



INDOOR UNIT



OUTDOOR UNIT

Product # ¹	Indoor Unit		GWC09ATCXB-D3DNA4A/ GWC09ATCXB-D3DNA1A/O	GWC12ATCXB-D3DNA4C/ GWC12ATCXB-D3DNA1C/O	GWC18ATDXD-D3DNA4A/ GWC18ATDXD-D3DNA1A/O	GWC24ATEXF-D3DNA4E/ GWC24QEXF-D3DNC4C/O
	Outdoor Unit					
Qty						
Technical Performance						
Voltage		Volts	230/208	230/208	230/208	230/208
Cooling capacity	Nominal	W (BTU/hr)	2667 (9100)	3517 (12000)	5159 (17600)	6450 (22000)
	Min. – max.	W (BTU/hr)	820 - 3018 (2800 - 10300)	700 - 3700 (2388 - 13307)	1100 - 5850 (3753 - 19960)	2000 - 7400 (6824 - 25249)
Used cooling power input	Nominal	W	805	1334	1750	1896
	Min. – max.	W	180 - 1350	180 - 1500	200 - 2300	340 - 2350
Used rated input		W	1450	1650	2300	2400
Rated current		A	6.5	6.7	9.5	12
MCA		A	9	11	14	15
Max. over-current protection (MOCP)		A	15	15	20	20
SEER2 (SEER)		-	19.5 (19.5)	17.5 (17.5)	17.5 (17.5)	18 (18)
EER		W/W	3.30	2.64	2.95	3.40
ENERGY STAR		-	-	-	-	-
Indoor Unit						
Dehumidification		pt/hr (l/hr)	1.69 (0.80)	2.96 (1.40)	3.8 (1.80)	5.28 (2.50)
Air flow volume		cfm	353 / 282.5 / 264.8 / 229.5 / 211.86 / 194.2 / 158.8	424 / 353 / 324 / 277 / 247 / 224 / 182	618 / 512 / 471 / 436 / 395 / 336 / 283	677 / 588 / 559 / 500 / 471 / 441 / 412
Sound level		dB (A)	51 / 47 / 44 / 42 / 41 / 38 / 36	57 / 49 / 48 / 45 / 43 / 42 / 37	60 / 56 / 54 / 52 / 50 / 46 / 42	61 / 57 / 55 / 52 / 50 / 48 / 46
Fan motor power output		W	20	15	45	60
Fan motor RLA		A	0.30	0.40	0.70	0.45
Deflector stepper motor power output		W	1.5	1.5	2.5	2.5
Net weight		lb (kg)	19.8 (9)	19.8 (9)	28.7 (13)	33 (18)
Outdoor Unit						
Air flow volume		m ³ /hr	1950	1950	2520	3200
Sound level		dB (A)	51	52	57	57
Compressor power input		W	756	857	1295	1330
Compressor LRA		A	-	-	25	35
Compressor RLA		A	5.20	7.30	9.35	10.45
Fan motor power output		W	30	30	30	60
Fan motor RLA		A	0.4	0.6	0.9	0.6
Refrigerant volume (R410A)		oz (g)	24.7 (700)	27.5 (750)	44.1 (1150)	52.9 (1500)
Net weight		lb (kg)	56.22 (25.5)	57.33 (26)	71.70 (32.5)	97 (44)
Operating ambient temperature	Cooling	°C (°F)	-18 to 46 (0 to 115)			
Connection Piping/Refrigerant						
Pre-charge length		ft. (m)	25 (7.5)	25 (7.5)	25 (7.5)	25 (7.5)
Additional refrigerant charge		oz/ft. (g/m)	0.2 (20)	0.2 (20)	0.2 (20)	0.5 (50)
Liquid pipe outer diameter		in.	1/4	1/4	1/4	1/4
Gas pipe outer diameter		in.	3/8	3/8	1/2	5/8
Maximum height difference		ft. (m)	66 (20)	66 (20)	66 (20)	66 (20)
Maximum total length		ft. (m)	66 (20)	66 (20)	82 (25)	82 (25)

¹ 1 indoor unit and 1 outdoor unit. Note that each unit is individually packaged.

Gree products are subject to continuous improvements. Dettson reserves the right to modify product design, specifications and information without notice and without incurring obligations.

Distributed by:



X61016_B