



# Alizé Heatpump

## MODELS



**COND-09-01**

**COND-12-01**

**COND-18-01**

**COND-24-01**

**COND-30-01**

**COND-36-01**

### Product features

- Variable speed compressor
- Specially designed fan blades for low drag, reducing fan noise to a minimum

### Benefits and differentiators

- Access to Dettson’s high performance HVAC Right-Sized System®
- Very small footprint
- Quiet outdoor operation with a maximum dB range of 46 to 65 at full capacity
- Uniform temperature for thermal comfort
- Lower CFM for a quieter air distribution
- Low electrical consumption in both mode: heating and cooling

Both refrigerant lines must be separately insulated in order to avoid condensation and to ensure the proper efficiency.

|                      | COND-09-01 | COND-12-01 | COND-18-01 | COND-24-01 | COND-30-01 | COND-36-01 |
|----------------------|------------|------------|------------|------------|------------|------------|
| Liquid line dia (In) | 1/4        | 1/4        | 1/4        | 1/4        | 1/4        | 1/4        |
| Gas line dia (In)    | 1/2        | 1/2        | 5/8        | 5/8        | 5/8        | 5/8        |

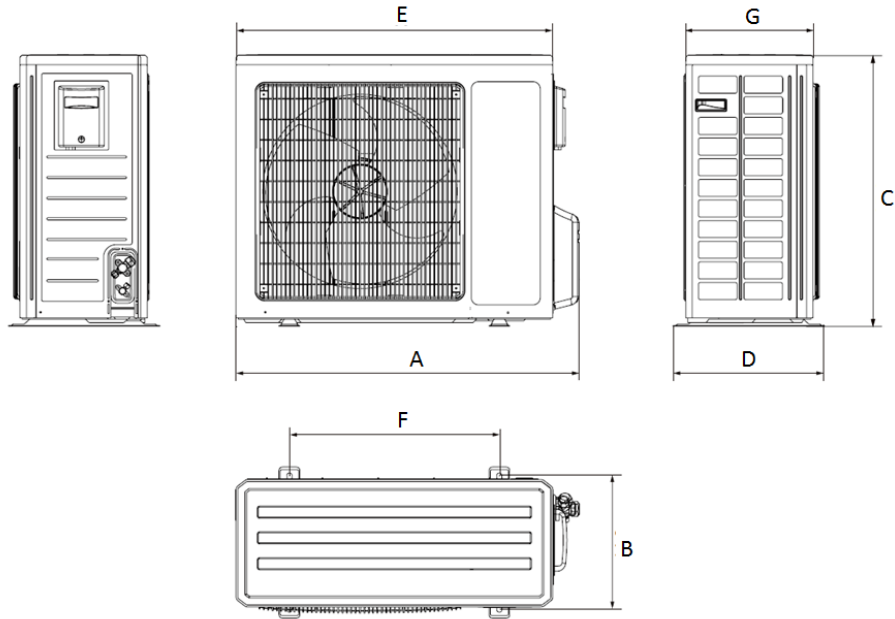
### CONTENT

PRODUCT SPECIFICATIONS.....2  
 UNIT DIMENSIONS (IN INCHES).....3  
 INDOOR COIL SPECIFICATIONS.....4  
 MINIMUM CLEARANCES TO COMBUSTIBLE MATERIALS.....5  
 MULTIPOSITION CONFIGURATIONS .....6  
 WIRING DIAGRAMS.....7  
 SPECIFICATION TEMPLATES .....10

## PRODUCT SPECIFICATIONS

| Model                                 |           | COND-09-01                 | COND-12-01            | COND-18-01            | COND-24-01            | COND-30-01             | COND-36-01             |
|---------------------------------------|-----------|----------------------------|-----------------------|-----------------------|-----------------------|------------------------|------------------------|
| Power Supply                          |           | 208/230V / 60Hz / 1 Phase  |                       |                       |                       |                        |                        |
| Cooling capacity (min~max)            | Btu/h     | 9000<br>(3500~9600)        | 12000<br>(3100~1300)  | 18000<br>(4600~20000) | 24000<br>(6800~26000) | 28000<br>(9500~30000)  | 33600<br>(7400~36000)  |
| Heating capacity (min~max)            | Btu/h     | 9800<br>(2200~11000)       | 13000<br>(2400~14000) | 19000<br>(3400~20000) | 25000<br>(7500~26000) | 28400<br>(10000~33000) | 34600<br>(15000~36000) |
| Rated current                         | A         | 9                          | 9                     | 11.1                  | 16                    | 16.7                   | 18.2                   |
| EER                                   | (Btu/h)/W | 14.5                       | 12.8                  | 12                    | 12                    | 10.1                   | 9.2                    |
| COP                                   |           | 3.8                        | 3.5                   | 3.5                   | 3.3                   | 2.9                    | 2.9                    |
| SEER                                  |           | 27                         | 25                    | 21                    | 21                    | 16                     | 16                     |
| HSPF                                  |           | 9                          | 9                     | 9.8                   | 10                    | 8.2                    | 8.2                    |
| Throttling method                     |           | Electronic expansion valve |                       |                       |                       |                        |                        |
| Cooling operation ambient             | ° F (°C)  | 40/109.4(4/43)             |                       |                       |                       |                        |                        |
| Heating operation ambient             | ° F (°C)  | 5/75.2(-15/24)             |                       |                       |                       |                        |                        |
| Defrosting method                     |           | Automatic defrosting       |                       |                       |                       |                        |                        |
| Sound pressure level                  | dB (A)    | 49                         | 49                    | 56                    | 56                    | 62                     | 65                     |
| Net weight                            | lb(kg)    | 86(39)                     | 87.1(39.5)            | 110.3(50)             | 153(70)               | 154.3(70)              | 161(73)                |
| Refrigerant                           |           | R410A                      |                       |                       |                       |                        |                        |
| Refrigerant charge                    | oz        | 45.9                       | 45.9                  | 56.5                  | 91.7                  | 84.7                   | 91.7                   |
| Connection pipe length                | ft(m)     | 24.6(7.5)                  |                       |                       |                       |                        |                        |
| Connection pipe gas additional charge | oz/ft.    | 0.2                        |                       |                       | 0.5                   |                        |                        |
| Outer diameter liquid pipe            | inch      | φ1/4                       |                       |                       |                       |                        |                        |
| Outer diameter gas pipe               | inch      | φ1/2                       |                       |                       | φ5/8                  |                        |                        |
| Max distance height                   | ft(m)     | 32.8(10)                   |                       |                       |                       |                        |                        |
| Max distance length                   | ft(m)     | 49.2(15)                   | 65.6(20)              | 82(25)                | 82(25)                | 98.4(30)               | 98.4(30)               |

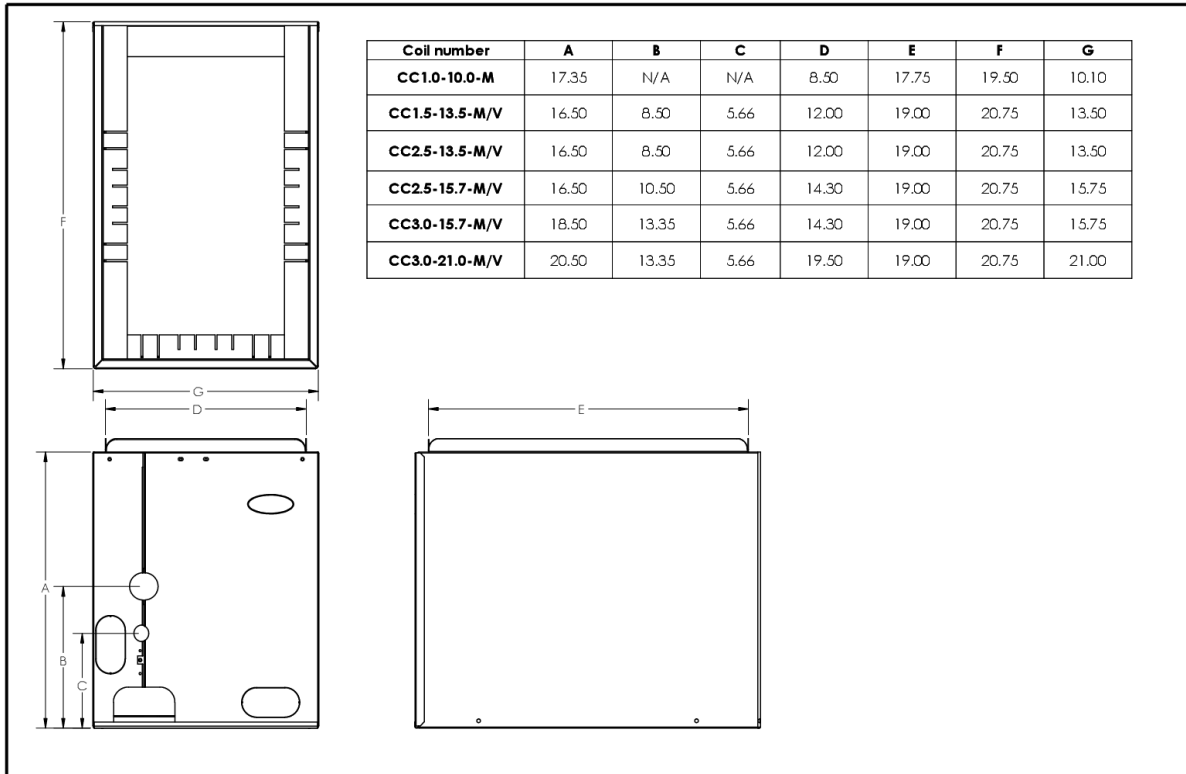
## UNIT DIMENSIONS (IN INCHES)



| Unit capacity (BTU/h) | A (Width)  | B (Depth)  | C (Height) | D          | E          | F          | G          |
|-----------------------|------------|------------|------------|------------|------------|------------|------------|
| 9/12K                 | 35.4(89.9) | 13.9(35.3) | 23.5(59.7) | 14.9(37.8) | 33(83.8)   | 21.7(55.1) | 11.9(30.2) |
| 18K                   | 37.6(95.5) | 14.3(36.3) | 27.6(70.1) | 15.6(39.6) | 35(88.9)   | 22(55.9)   | 13.4(34.0) |
| 24K                   | 38.6(98.0) | 15.6(39.6) | 31.1(79.0) | 16.8(42.7) | 36.2(91.9) | 24(61.0)   | 14.6(37.1) |
| 30/36K                | 38.6(98.0) | 15.7(39.9) | 31.1(79.0) | 16.7(42.4) | 36(91.4)   | 24(61.0)   | 14.6(37.1) |

# INDOOR COIL SPECIFICATIONS

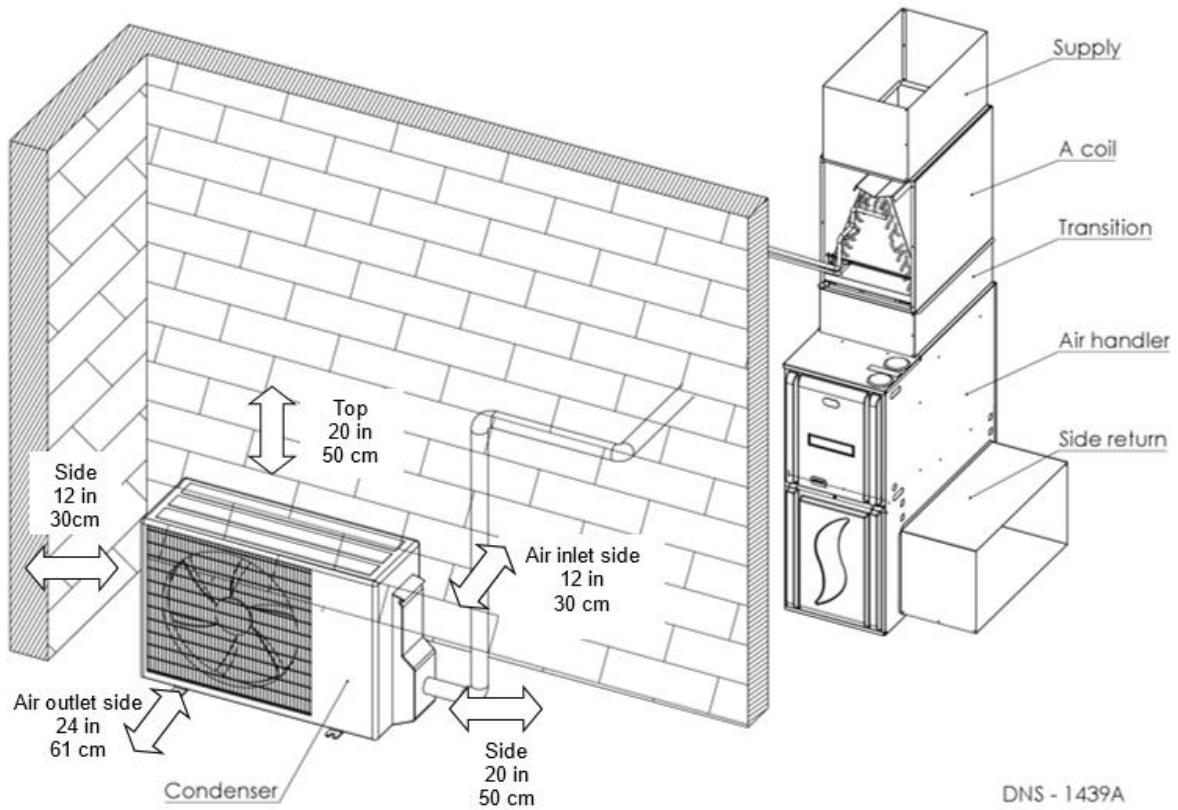
## INDOOR COIL DIMENSIONS



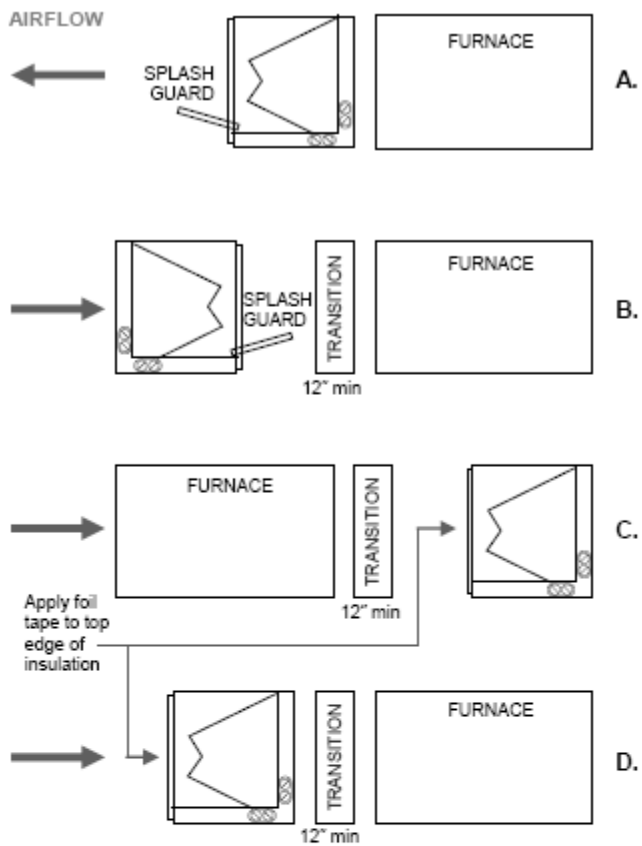
## INDOOR COIL SPECIFICATIONS

| Coil model number | Cabinet Dimensions (in) |       |       | Nominal Tons | Connection (in) |     | Ship Weight (lbs) |
|-------------------|-------------------------|-------|-------|--------------|-----------------|-----|-------------------|
|                   | W                       | D     | H     |              | Liquid          | Gas |                   |
| CC1.0-10.0-M      | 10.10                   | 19.50 | 17.35 | 1.0          | 1/4             | 1/2 | 40                |
| CC1.5-13.5-M/V    | 13.50                   | 20.75 | 16.50 | 1.5          | 1/4             | 5/8 | 40                |
| CC2.5-13.5-M/V    | 13.50                   | 20.75 | 16.50 | 2.5          | 1/4             | 5/8 | 40                |
| CC2.5-15.7-M/V    | 15.75                   | 20.75 | 16.50 | 2.5          | 1/4             | 5/8 | 41                |
| CC3.0-15.7-M/V    | 15.75                   | 20.75 | 18.50 | 3.0          | 1/4             | 5/8 | 51                |
| CC3.0-21.0-M/V    | 21.00                   | 20.75 | 20.50 | 3.0          | 1/4             | 5/8 | 51                |

# MINIMUM CLEARANCES TO COMBUSTIBLE MATERIALS



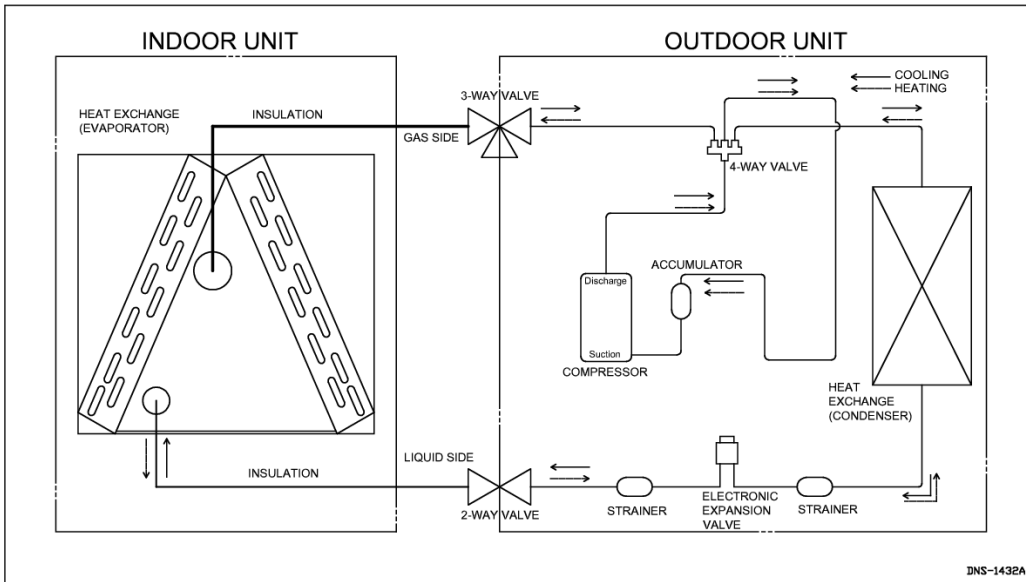
## MULTIPOSITION CONFIGURATIONS



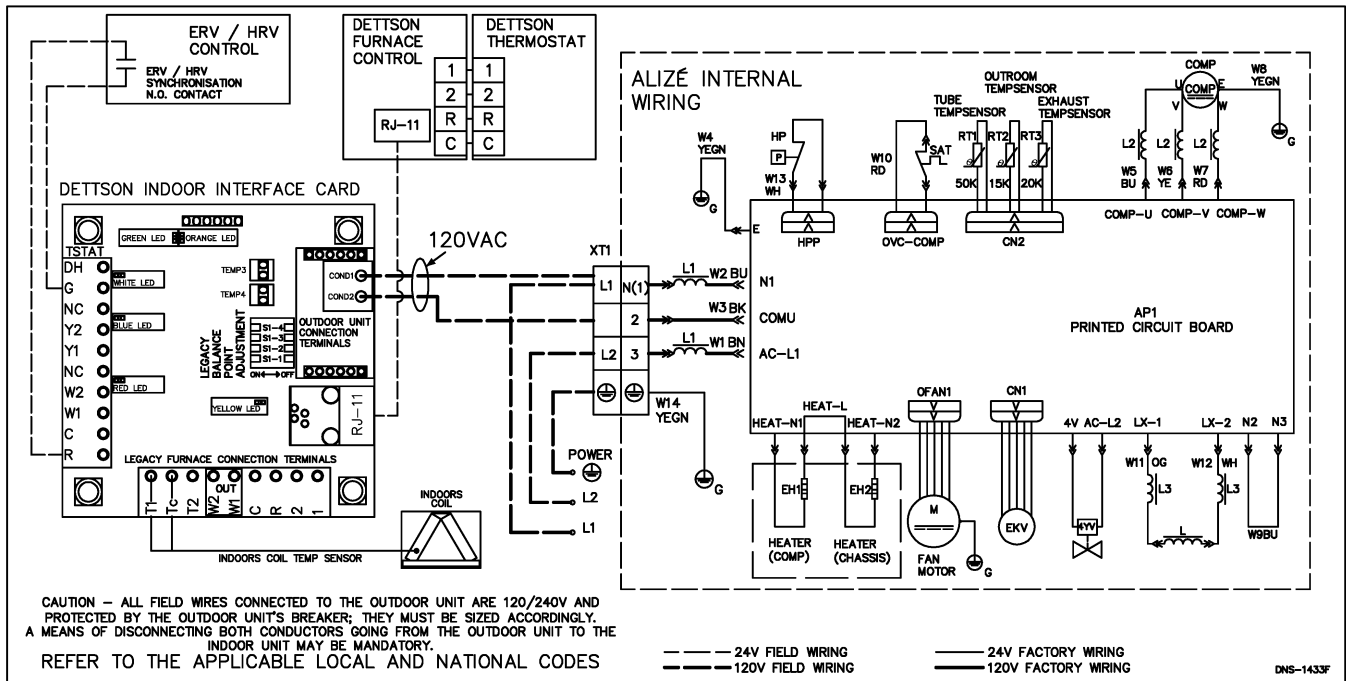
- 
- A. **Standard Horizontal Application**  
Left hand shown / Right hand similar (*not shown*)  
LOWEST STATIC CONFIGURATION  
*See Spec Guide for additional data*
  - B. **Pull-Through**  
Right hand shown / Left hand similar (*not shown*)
  - C. **Blow-Through (counter flow)**  
Left hand shown / Right hand similar (*not shown*)
  - D. **Pull-Through (counter flow)**  
Left hand shown / Right hand similar (*not shown*)

# WIRING DIAGRAMS

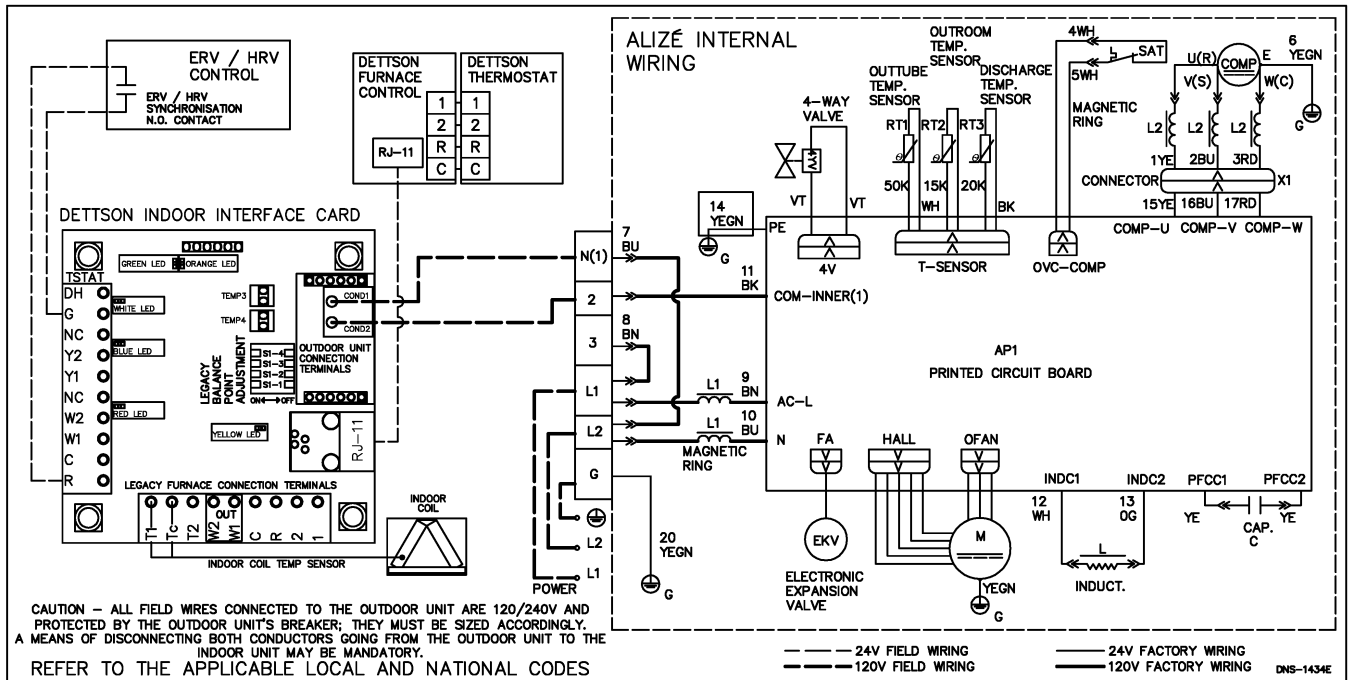
## REFRIGERANT SYSTEM DIAGRAM



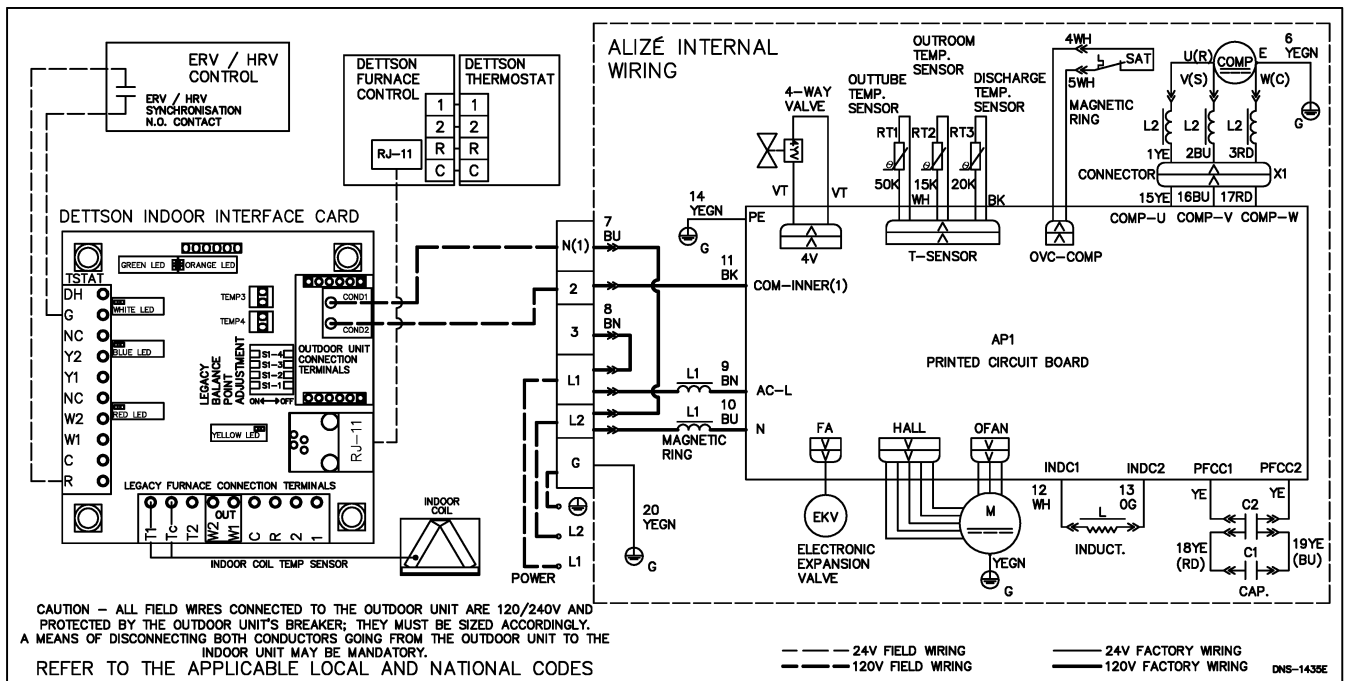
## 9/12K ELECTRICAL DIAGRAM



# 18K ELECTRICAL DIAGRAM

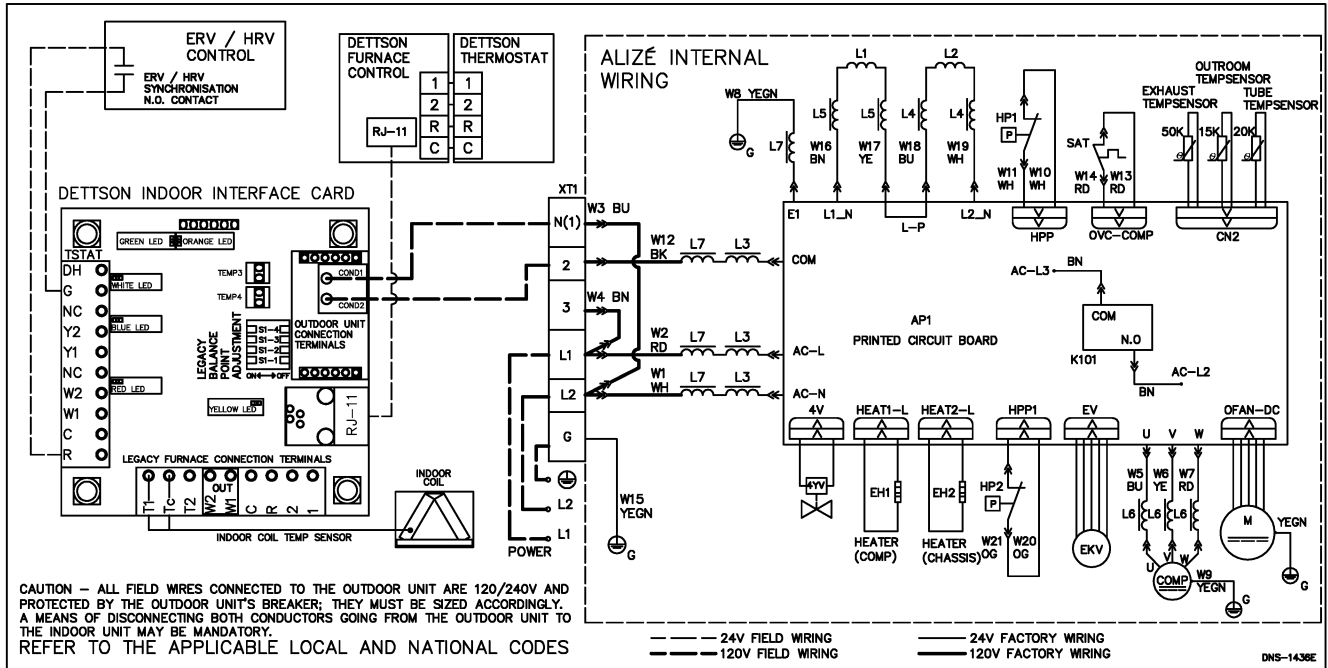


# 24K ELECTRICAL DIAGRAM





# 30/36K ELECTRICAL DIAGRAM



# SPECIFICATION TEMPLATES



## OUTDOOR CONDENSING UNIT

|   |                       |
|---|-----------------------|
| Model   | COND-09-01            |
| Cooling Capacity  | 9000(3500~9600)Btu/h  |
| Heating Capacity  | 9800(2200~11000)Btu/h |
| Voltage/Phase   | 208/230V/1            |
| Frequency   | 60Hz                  |
| Compressor  |                       |
| RLA   | 6.2A                  |
| LRA   | -                     |
| Fan Motor   |                       |
| Outdoor   | 0.18A                 |
| Design Pressure(High)                                     | 550PSIG               |
| Design Pressure(Low)                                      | 240PSIG               |
| Max Fuse Size/Fusible Max.                                | 15A                   |
| Max Ckt, Bkr Size/Disjoncteur Max.<br>(Hacr Type Per Nec) | 15A                   |
| Min. Circuit Ampacity                                     | 10A                   |
| Refrigerant(R410A)  | 45.86oz               |
| Date of Manufacture                                       | YYYY.MM               |

OUTDOOR USE  
UTILISATION À L'EXTÉRIEUR

WARNING: RISK OF ELECTRIC SHOCK. CAN CAUSE INJURY OR DEATH:  
DISCONNECT ALL REMOTE ELECTRIC POWER SUPPLIES BEFORE SERVICING.  
AVERTISSEMENT. RISQUE DE CHOCS ÉLECTRIQUES.  
PEUT CAUSER DES BLESSURES ET MÊME ENTRAÎNER LA MORT.  
COUPER LES SOURCES D'ALIMENTATION À DISTANCE AVANT LE DÉPANNAGE.  
USE COPPER SUPPLY WIRES.  
UTILISER DES FILS D'ALIMENTATION EN CUIVRE.



CONFORMS TO UL  
STD. 1995  
CERTIFIED TO  
CSA STD. C22.2  
No.236

DETTSON INDUSTRIES INC.



63229958384



## OUTDOOR CONDENSING UNIT

|   |                        |
|---|------------------------|
| Model   | COND-12-01             |
| Cooling Capacity  | 12000(3100~13000)Btu/h |
| Heating Capacity  | 13000(2400~14000)Btu/h |
| Voltage/Phase   | 208/230V/1             |
| Frequency   | 60Hz                   |
| Compressor  |                        |
| RLA   | 6.2A                   |
| LRA   | -                      |
| Fan Motor   |                        |
| Outdoor   | 0.18A                  |
| Design Pressure(High)                                     | 550PSIG                |
| Design Pressure(Low)                                      | 240PSIG                |
| Max Fuse Size/Fusible Max.                                | 15A                    |
| Max Ckt, Bkr Size/Disjoncteur Max.<br>(Hacr Type Per Nec) | 15A                    |
| Min. Circuit Ampacity                                     | 10A                    |
| Refrigerant(R410A)  | 45.86oz                |
| Date of Manufacture                                       | YYYY.MM                |

OUTDOOR USE  
UTILISATION À L'EXTÉRIEUR

WARNING: RISK OF ELECTRIC SHOCK. CAN CAUSE INJURY OR DEATH:  
DISCONNECT ALL REMOTE ELECTRIC POWER SUPPLIES BEFORE SERVICING.  
AVERTISSEMENT. RISQUE DE CHOCS ÉLECTRIQUES.  
PEUT CAUSER DES BLESSURES ET MÊME ENTRAÎNER LA MORT.  
COUPER LES SOURCES D'ALIMENTATION À DISTANCE AVANT LE DÉPANNAGE.  
USE COPPER SUPPLY WIRES.  
UTILISER DES FILS D'ALIMENTATION EN CUIVRE.



CONFORMS TO UL  
STD. 1995  
CERTIFIED TO  
CSA STD. C22.2  
No.236

DETTSON INDUSTRIES INC.



63229958385



### OUTDOOR CONDENSING UNIT

|   |            |
|---|------------|
| Model   | COND-18-01 |
| Cooling Capacity  | 18000Btu/h |
| Heating Capacity  | 19000Btu/h |
| Voltage/Phase   | 208/230V/1 |
| Frequency   | 60Hz       |
| Compressor  |            |
| RLA   | 10.8A      |
| LRA   | -          |
| Fan Motor   |            |
| Outdoor   | 0.5A       |
| Design Pressure(High)                                     | 550PSIG    |
| Design Pressure(Low)                                      | 240PSIG    |
| Max Fuse Size/Fusible Max.                                | 20A        |
| Max Ckt, Bkr Size/Disjoncteur Max.<br>(Hacr Type Per Nec) | 20A        |
| Min. Circuit Ampacity                                     | 15A        |
| Refrigerant(R410A)  | 56.45oz    |
| Date of Manufacture                                       | YYYY.MM    |

OUTDOOR USE  
UTILISATION À L'EXTÉRIEUR

WARNING: RISK OF ELECTRIC SHOCK. CAN CAUSE INJURY OR DEATH.  
DISCONNECT ALL REMOTE ELECTRIC POWER SUPPLIES BEFORE SERVICING.  
AVERTISSEMENT. RISQUE DE CHOCS ÉLECTRIQUES.  
PEUT CAUSER DES BLESSURES ET MÊME ENTRAÎNER LA MORT.  
COUPER LES SOURCES D'ALIMENTATION À DISTANCE AVANT LE DÉPANNAGE.  
USE COPPER SUPPLY WIRES.  
UTILISER DES FILS D'ALIMENTATION EN CUIVRE.



CONFORMS TO UL  
STD. 1995  
CERTIFIED TO  
CSA STD. C22.2  
No.236

DETTSON INDUSTRIES INC.



63229958386



### OUTDOOR CONDENSING UNIT

|   |            |
|---|------------|
| Model   | COND-24-01 |
| Cooling Capacity  | 24000Btu/h |
| Heating Capacity  | 25000Btu/h |
| Voltage/Phase   | 208/230V/1 |
| Frequency   | 60Hz       |
| Compressor  |            |
| RLA   | 14.67A     |
| LRA   | -          |
| Fan Motor   |            |
| Outdoor   | 0.65A      |
| Design Pressure(High)                                     | 550PSIG    |
| Design Pressure(Low)                                      | 240PSIG    |
| Max Fuse Size/Fusible Max.                                | 30A        |
| Max Ckt, Bkr Size/Disjoncteur Max.<br>(Hacr Type Per Nec) | 30A        |
| Min. Circuit Ampacity                                     | 20A        |
| Refrigerant(R410A)  | 91.7oz     |
| Date of Manufacture                                       | YYYY.MM    |

OUTDOOR USE  
UTILISATION À L'EXTÉRIEUR

WARNING: RISK OF ELECTRIC SHOCK. CAN CAUSE INJURY OR DEATH.  
DISCONNECT ALL REMOTE ELECTRIC POWER SUPPLIES BEFORE SERVICING.  
AVERTISSEMENT. RISQUE DE CHOCS ÉLECTRIQUES.  
PEUT CAUSER DES BLESSURES ET MÊME ENTRAÎNER LA MORT.  
COUPER LES SOURCES D'ALIMENTATION À DISTANCE AVANT LE DÉPANNAGE.  
USE COPPER SUPPLY WIRES.  
UTILISER DES FILS D'ALIMENTATION EN CUIVRE.



CONFORMS TO UL  
STD. 1995  
CERTIFIED TO  
CSA STD. C22.2  
No.236

DETTSON INDUSTRIES INC.



63229958387



### OUTDOOR CONDENSING UNIT

|   |                         |
|---|-------------------------|
| Model   | COND-30-01              |
| Cooling Capacity  | 28000(9500~30000)Btu/h  |
| Heating Capacity  | 28400(10000~33000)Btu/h |
| Voltage/Phase   | 208/230V/1              |
| Frequency   | 60Hz                    |
| Compressor  |                         |
| RLA   | 13.45A                  |
| LRA   | -                       |
| Fan Motor   |                         |
| Outdoor   | 0.45A                   |
| Design Pressure(High)                                     | 550PSIG                 |
| Design Pressure(Low)                                      | 240PSIG                 |
| Max Fuse Size/Fusible Max.                                | 30A                     |
| Max Ckt, Bkr Size/Disjoncteur Max.<br>(Hacr Type Per Nec) | 30A                     |
| Min. Circuit Ampacity                                     | 20A                     |
| Refrigerant(R410A)  | 84.66oz                 |
| Date of Manufacture                                       | YYYY.MM                 |

OUTDOOR USE  
UTILISATION À L'EXTÉRIEUR

WARNING: RISK OF ELECTRIC SHOCK. CAN CAUSE INJURY OR DEATH:  
DISCONNECT ALL REMOTE ELECTRIC POWER SUPPLIES BEFORE SERVICING.  
AVERTISSEMENT. RISQUE DE CHOCS ÉLECTRIQUES.  
PEUT CAUSER DES BLESSURES ET MÊME ENTRAÎNER LA MORT.  
COUPER LES SOURCES D'ALIMENTATION À DISTANCE AVANT LE DÉPANNAGE.  
USE COPPER SUPPLY WIRES.  
UTILISER DES FILS D'ALIMENTATION EN CUIVRE.



CONFORMS TO  
UL STD. 1995  
CERTIFIED TO  
CSA STD. C22.2  
No.236

DETTSON INDUSTRIES INC.



63229958388



### OUTDOOR CONDENSING UNIT

|   |                         |
|---|-------------------------|
| Model   | COND-36-01              |
| Cooling Capacity  | 33600(7400~36000)Btu/h  |
| Heating Capacity  | 34600(15000~36000)Btu/h |
| Voltage/Phase   | 208/230V/1              |
| Frequency   | 60Hz                    |
| Compressor  |                         |
| RLA   | 17.50A                  |
| LRA   | -                       |
| Fan Motor   |                         |
| Outdoor   | 0.73A                   |
| Design Pressure(High)                                     | 550PSIG                 |
| Design Pressure(Low)                                      | 240PSIG                 |
| Max Fuse Size/Fusible Max.                                | 40A                     |
| Max Ckt, Bkr Size/Disjoncteur Max.<br>(Hacr Type Per Nec) | 40A                     |
| Min. Circuit Ampacity                                     | 24A                     |
| Refrigerant(R410A)  | 91.71oz                 |
| Date of Manufacture                                       | YYYY.MM                 |

OUTDOOR USE  
UTILISATION À L'EXTÉRIEUR

WARNING: RISK OF ELECTRIC SHOCK. CAN CAUSE INJURY OR DEATH:  
DISCONNECT ALL REMOTE ELECTRIC POWER SUPPLIES BEFORE SERVICING.  
AVERTISSEMENT. RISQUE DE CHOCS ÉLECTRIQUES.  
PEUT CAUSER DES BLESSURES ET MÊME ENTRAÎNER LA MORT.  
COUPER LES SOURCES D'ALIMENTATION À DISTANCE AVANT LE DÉPANNAGE.  
USE COPPER SUPPLY WIRES.  
UTILISER DES FILS D'ALIMENTATION EN CUIVRE.



CONFORMS TO  
UL STD. 1995  
CERTIFIED TO  
CSA STD. C22.2  
No.236

DETTSON INDUSTRIES INC.



63229958389